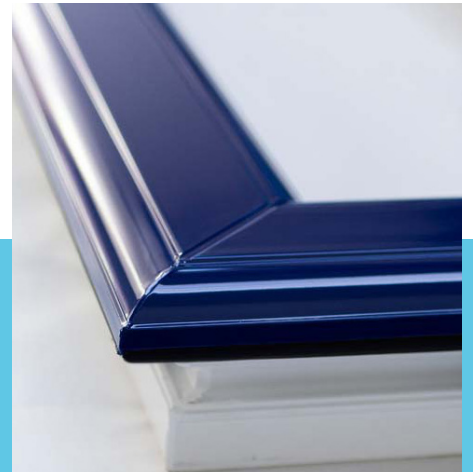




CRI

CREATIVE RESINS
INTERNATIONAL



PlasPaint

SURFACE COATING FOR COMPOSITE, PVC, ALUMINIUM, STEEL AND WOOD



CRI PLASPAIN

An exterior surface coating for PVC, aluminium, composite, steel and wood. Available in Solvent and Water based systems.



Plaspaint Introduction

Plaspaint is a specially designed 2 pack solvent based paint available for in-house mixing or pre mixed to any colour. Plaspaint is compatible with many surfaces such as PVC, composite, aluminium and many more.



Plaspaint is a very versatile paint and is sold in to the market for various different applications. Painting Composite Doors, Glazing Cassettes, UPVC and Aluminium Windows could never have been easier. Whether it's just plain white UPVC (PVCu) or foiled it can be painted to any colour using the remarkable Plaspaint. Matt, Satin, Gloss or our unique Euro Texture Plaspaint offers unlimited choice of finish.

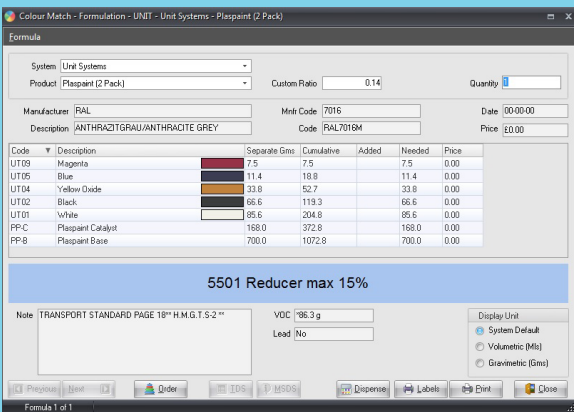
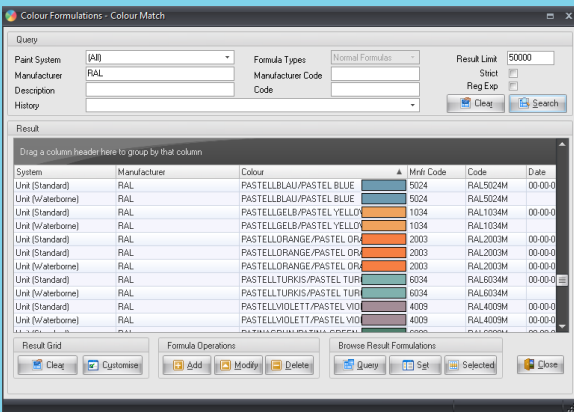
Plaspaint is manufactured in the UK by Creative Resins. It is a specialist coating, consisting of a unique blend of Acrylic and Polyurethane resins that provide strength, flexibility, excellent scratch and chemical resistance as well as an incredible surface cross bond.



ANY COLOUR ANY FINISH
WE CAN MATCH ANY COLOUR

Plaspaint 'Colour Match'

'Colour Match' software has been written exclusively for CRI. Allows you to formulate in excess of 15,000 colours from the leading paint manufacturers including RAL, NCS, Pantone and Dulux to name a few.



Small or large quantities can be processed depending on the size of the job and amount of paint required. There are 19 concentrated coloured pigments that are used in the formulation software. Simply select a colour, the amount that is required and the base product you are using (eg Plaspaint or GlassPaint / solvent or water based) and our 'Colour Match' software will generate a formulation showing the colours required and the amount or volume of each. Simply weigh each colour and add it to the base material if preparing manually or dispense automatically using one of our precision dispensing systems.

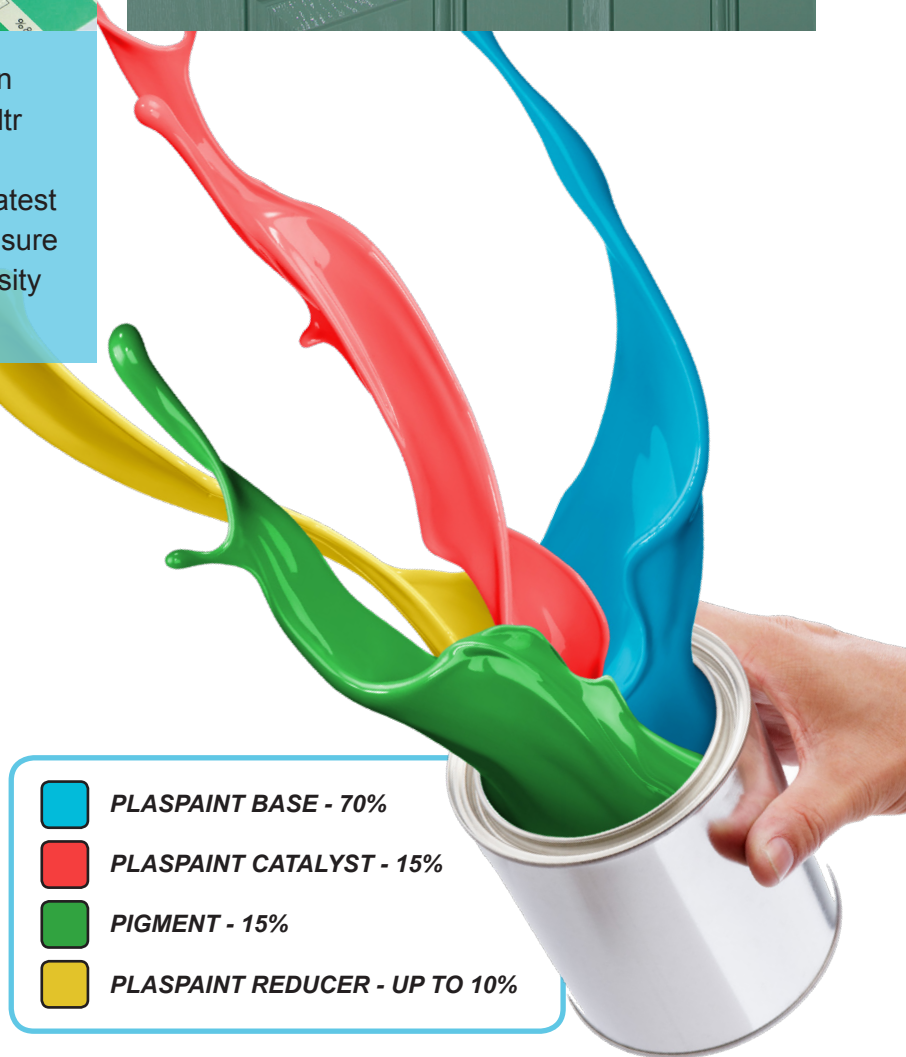
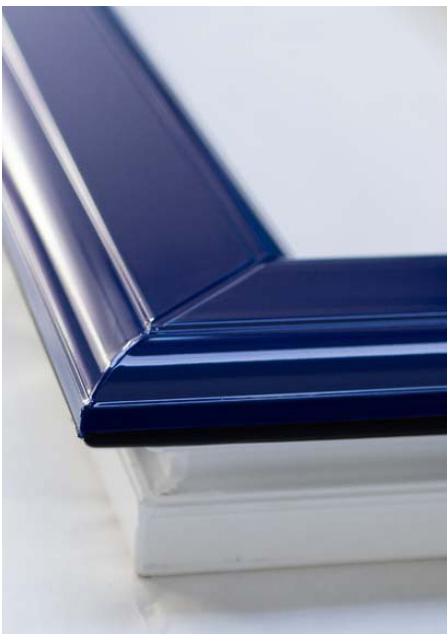
'Colour Match' is continually updated with new colour formulations on a daily basis and is available in a wide range of languages. Product Code. CON-CMS





Plaspaint 'Colour Match'

'Colour Match' has an optional integrated Photo-Spectrometer attached directly to the software. It can read any non-standard colour samples provided by clients and find a matching formulation from the colour library.



For customers not wanting to mix colours in house we also offer pre-mixed colours in 1ltr and 2.5Ltr volumes. We boast our own in house colour matching facility with all the latest mixing and colour reading equipment to ensure colour consistency, sheen levels and viscosity are the same time and time again.



-  **PLASPAIN BASE - 70%**
-  **PLASPAIN CATALYST - 15%**
-  **PIGMENT - 15%**
-  **PLASPAIN REDUCER - UP TO 10%**

Plaspaint Waterbased

PlasPaint is now available as a single component water based product. It is VOC free, eco-friendly, UV stable and totally weather resistant.



A single pack VOC free acrylic resin formulated for use on Composite Doors, Wood, Steel and Aluminium. Permanent adhesion and excellent scratch and abrasion resistance. brilliant weathering and chemical resistance with superb colour fastness, easy to use and available in any colour



Plaspaint H2O Base
Product Code. PP-W



Plaspaint H2O Pigment
Product Code. PP-W-P



Plaspaint H2O Pre Mix
Product Code. PP-W-PM



White
WB01



Black
WB02



Red Oxide
WB03



Yellow Oxide
WB04



Blue
WB05



Green
WB06



Magenta
WB09



Violet
WB10



Green/Yellow
WB12



Bright Red
WB13



Maroon
WB15



Red/Yellow
WB15



Bright Yellow
WB16



Bright Orange
WB17



Black Gloss
WB19



Plaspaint 'GrainEx'

Transforming a GRP composite door slab, PVCu profile or trim into a stunning real wood effect could not be easier. GrainEx has been matched to the most popular natural wood colours used in the industry today.



Base Coat Pre Mixed
1ltr to 25ltr

Product Code PP-GNXBASE

Golden Oak	Burnt Oak
Irish Oak	Cherry
Mahogany	Dark Mahogany
Dark Oak	Espresso
Light Oak	Hickory
Swamp Oak	Oak Dark Cherry
Winchester	Teak
Eiche Dunkel	Walnut
Nussbaum	



Woodgrain Patina
125ml or 500ml

Product Code

Golden Oak
Irish Oak
Mahogany
Dark Oak
Light Oak
Swamp Oak
Winchester
Eiche Dunkel
Nussbaum

PP-GNX

Burnt Oak
Cherry
Dark Mahogany
Espresso
Hickory
Oak Dark Cherry
Teak
Walnut

GrainEx is a pre-mixed formulated grain enhancing solution. They are solvent free, VOC free and odourless. They are easy to apply with a special sponge head bottle providing a permanent adhesion with minimal mess and waste. Totally UV stable.



Woodgrain Application Directions

1. Select the PlasPaint Woodgrain Base Coat colour of your choice (Teak etc), spray the surface and allow it to dry.
2. Apply the matching GrainEx patina using the application bottle provided. Remove any excess using a soft cloth.
3. Apply PlasPaint Woodgrain Top Coat (Matt, Satin or Gloss - depending which sheen level you require) over the surface to finish.



Plaspaint Aerosol

Plaspaint is available in aerosols as a 1K and 2K system for on site touch ups and repairs, any colour is possible from our 'Colour Match' software in any Matt, Gloss or Satin finish.

A new and exclusive range of aerosol cans for touch up and repair work on site. The 2K system has a self contained hardener that is released in to the can with a push valve, providing 8 hours of use once released. 1K system is a 1 pack base which requires no catalyst. Both systems can be manufactured to any colour and any finish.



Plaspaint Aerosol 2K

Product Code. PP-AERO2K



Plaspaint Aerosol 1K

Product Code. PP-AERO1K



Plaspaint Aerosol

Creative Resins are now supplying the aerosol filling machines, working in harmony with our Plaspaint system customers will be able to fill 2K cans in house.

AND EXCLUSIVE



The aerosol filling Machine is a semi- automatic machine for the filling of pre-charged aerosols with CRI Plaspaint.

It is housed in a stainless steel cabinet and pneumatically operated.

The innovative design of the filling jar means the machine fills all the paint into the aerosol and does not leave any paint in the dip-tube or the top of the valve.

Plaspaint Material

Plaspaint base paint available in Matt, Gloss, or Semi.

19 opaque coloured pigments plus 3 aluminium pigments, together with the Plaspaint catalyst complete the mix.



Plaspaint Matt Base
30 litre system
Product Code. PPM



Plaspaint Gloss Base
30 litre system
Product Code. PPG



Plaspaint Catalyst
30 litre system
Product Code. CAT



19 Opaque pigments, plus 3 aluminium pigments to create over 15,000 colours from our 'Colour Match' software, including RAL, Pantone, NCS and many more.
Product Code. CP-S-UT__

UT01 - WHITE

UT02 - BLACK

UT03 - RED OXIDE

UT04 - YELLOW OXIDE

UT05 - BLUE

UT06 - GREEN

UT07 - GOLDEN

UT08 - LEMON

UT09 - MAGENTA

UT10 - VIOLET

UT11 - SCARLETT

UT12 - GREEN/YELLOW

UT13 - BRIGHT RED

UT14 - MAROON

UT15 - RED/YELLOW

UT16 - BRIGHT YELLOW

UT17 - BRIGHT ORANGE

UT18 - BORDEAUX

UT19 - BLACK GLOSS

UT30 - FINE ALUMINIUM

UT31 - ALUMINIUM

UT32 - COURSE ALUMINIUM

Plaspaint Material

Plaspaint Pre Mixed is available in any colour, quantities 1ltr to 25ltr.
Specialist degreaser, cleaners and paint reducers are available to work in unisome with our paints.



Plaspaint Pre Mixed
Product Code. PLAS-PREM



Plaspaint Catalyst
Product Code. CAT



Plaspaint Reducer
Product Code. RED



Plaspaint Primer
Product Code. PPP



Surface Degreaser
Product Code. DEG



Foil Safe Degreaser
Product Code. DEG-FS



Plaspaint Texture Finish
Product Code. PPT



Surafce Preparation Pads
Product Code. PREPPAD



Laqured Tin & Lid
Product Code. TIN1, TIN2.5, TIN5



Creative Resins International, Unit 17C, Upperfield Road, Sittingbourne, Kent, ME10 3UP , United Kingdom
Web. www.creative-resins.co.uk | Tel. 0044 (0) 1795 411820 | Email. info@creative-resins.co.uk